

**SUPPLEMENT D56  
TO THE AIRPLANE FLIGHT MANUAL  
DA 62**

**CDA ANDORRA CONFIGURATION**

**Doc. No.** : 7.01.25-E  
: 11.01.05-E  
**Date of Issue of the Supplement** : 14-Feb-2025  
**Design Change Advisory** : DEO 62-056

The technical information contained in this document has been approved under the authority of DOA ref. EASA.21J.052.



Intentionally left blank.

**0.1 RECORD OF REVISIONS**

Rev. No.	Reason	Chapter	Page(s)	Date of Revision	Approval Note	Date of Approval	Date Inserted	Signature

**0.3 LIST OF EFFECTIVE PAGES**

Chapter	Page	Date
0	9-D56-1	14-Feb-2025
	9-D56-2	14-Feb-2025
	9-D56-3	14-Feb-2025
	9-D56-4	14-Feb-2025
	9-D56-5	14-Feb-2025
	9-D56-6	14-Feb-2025
1	9-D56-7	14-Feb-2025
2	appr. 9-D56-8	14-Feb-2025
3	9-D56-9	14-Feb-2025
4A	9-D56-10	14-Feb-2025
4B	9-D56-11	14-Feb-2025
5	9-D56-11	14-Feb-2025
6	9-D56-12	14-Feb-2025
	9-D56-13	14-Feb-2025
	9-D56-14	14-Feb-2025
	9-D56-15	14-Feb-2025
7	9-D56-16	14-Feb-2025
	9-D56-17	14-Feb-2025
	9-D56-18	14-Feb-2025
8	9-D56-19	14-Feb-2025
	9-D56-20	14-Feb-2025

Page 9-D56-4	14-Feb-2025	Rev. 0	Doc. # 7.01.25-E Doc. # 11.01.05-E
-----------------	-------------	--------	---------------------------------------

## 0.4 TABLE OF CONTENTS

1. GENERAL.....	9-D56-7
2. OPERATING LIMITATIONS .....	9-D56-8
3. EMERGENCY PROCEDURES .....	9-D56-9
4A.NORMAL OPERATING PROCEDURES.....	9-D56-10
4B.ABNORMAL OPERATING PROCEDURES.....	9-D56-11
5. PERFORMANCE.....	9-D56-11
6. MASS AND BALANCE .....	9-D56-12
7. DESCRIPTION OF THE AIRPLANE AND ITS SYSTEMS.....	9-D56-16
8. AIRPLANE HANDLING, CARE AND MAINTENANCE.....	9-D56-19

## FOREWORD

This document is protected by copyright. All associated rights, in particular those of translation, reprinting, radio transmission, reproduction by photo-mechanical or similar means and storing in data processing facilities, in whole or part, are reserved.

Copyright © by: DIAMOND AIRCRAFT INDUSTRIES GMBH

Nikolaus-August-Otto-Strasse 5

2700 Wiener Neustadt, Austria

Phone : +43-2622-26700

Fax : +43-2622-26780

E-Mail : [office@diamondaircraft.com](mailto:office@diamondaircraft.com)

Any occurrence related to this DEO shall be reported in writing to the address above or submitted to E-Mail [airworthiness-austria@diamondaircraft.com](mailto:airworthiness-austria@diamondaircraft.com).

## 1. GENERAL

### 1.1 INTRODUCTION

The DA 62 MPP can be equipped with an optional NSAS Belgium Configuration. To enable this installation the WX Multi-Purpose Nose (System No.: M30) must be installed.

The supplements of the following modules must be included into the AFM:

<b>Modules</b>	<b>Doc. No.</b>
M30 - WX Multi-Purpose Nose	Supplement STC-62-001-M30
M50 - Camera Hatch	Supplement STC-62-001-M50
M90 Equipment Wiring Installation Duct	Supplement STC-62-001-M90
Alternative Seating Configuration	Supplement STC 62-002
M10 - Display Mount Provision	SupplementM10

## 2. OPERATING LIMITATIONS

### 2.12 FLIGHT CREW

For flights with the MISSION MASTER switch ON:

Minimum crew : 2 (two persons) consisting of  
: 1 pilot and  
1 mission equipment operator  
seated in the rear cabin

### **WARNING**

The operation of the airplane in aerial work needs special training for the pilot and the operator.

### 2.13 KINDS OF OPERATION

Flights according to VFR, NVFR and IFR with mission master ON are permitted.

### 2.14 LIMITATION PLACARDS

All limitation placards are shown below. A list of all placards is included in the Supplemental Airplane Maintenance Manual (Doc. No. 7.02.25- DEO 62-056).

No Baggage  
allowed

Max. Baggage:  
20 kg (44 lb)



### 3. EMERGENCY PROCEDURES

#### **WARNING**

The mission system power supply must be switched off in any emergency, abnormal, or icing condition.

### 3.12 SMOKE AND FIRE

#### 3.12.6 CABIN SMOKE

1. MISSION MASTER ..... OFF

*Initiate an emergency descent*

2. FLAPS ..... UP
3. LANDING GEAR ..... DOWN
4. POWER lever ..... IDLE
5. FLAPS ..... as required

#### **WARNING**

Max. operating speed with equipment installed:  $v_{MAX} = 162$  KIAS

6. Land on the nearest suitable airfield.

**END OF CHECKLIST**

## 4A. NORMAL OPERATING PROCEDURES

### 4A.6 CHECKLISTS FOR NORMAL OPERATING PROCEDURES

#### 4A.6.6 BEFORE TAKE-OFF

1. Loose equipment securely stowed . . . . . checked
2. Baggage net . . . . . installed and tightened

END OF CHECKLIST

#### 4A.6.22 USING MISSION EQUIPMENT

*Starting mission:*

1. POSITION LIGHTS and STROBE . . . . . ON
2. MISSION MASTER . . . . . ON

### **WARNING**

The mission system power supply must be switched off in any emergency, abnormal, or icing condition.

*After mission:*

1. MISSION MASTER . . . . . OFF

END OF CHECKLIST

#### 4A.6.11 APPROACH & LANDING

1. Loose equipment securely stowed . . . . . checked

END OF CHECKLIST

Page 9-D56-10	14-Feb-2025	Rev. 0	Doc. # 7.01.25-E Doc. # 11.01.05-E
------------------	-------------	--------	---------------------------------------

## 4B. ABNORMAL OPERATING PROCEDURES

No change.

## 5. PERFORMANCE

No change.

## 6. MASS AND BALANCE

### 6.4 FLIGHT MASS AND CENTER OF GRAVITY

#### 6.4.1 MOMENT ARMS

The lever arms of the individual items of the CDA Andorra Configuration aft of the Datum Plane:

Item	Mass		Lever Arm	
	kg	lb	m	in
Cellular Broadband Blade Antenna	0.17	0.37	0.49	19.29
Cellular Broadband Blade Antenna	0.17	0.37	1.29	50.79
DC/DC Converter 120W	0.30	0.66	4.30	169.29
Blackmagic Video Assist 7" 12G HDR	0.81	1.79	1.90	74.80
Rugged Keyboard	0.96	2.12	2.86	112.60
17,3" High Definition Rugged Display	4.45	9.81	2.77	109.05
17,3" High Definition Rugged Display	4.45	9.81	2.77	109.05
Telescope Camera Assy	3.85	8.49	3.36	132.28
Telescope	17.95	39.57	3.36	132.28

Item	Mass		Lever Arm	
	kg	lb	m	in
Gyro Unit	3.85	8.49	4.10	161.42
Mission Computer, Fanless	5.67	12.50	4.04	159.05
Ethernet Switch	0.83	1.83	3.98	156.69
LTE/5G Mobile Router	0.69	1.52	3.98	156.69
Yellowbrik SDI Reclocking Distribution Amplifier	0.31	0.68	3.99	157.09
GPS Antenna (L1/L2/L5 GPS/GLONASS)	0.19	0.42	-0.58	-22.83
GPS Antenna (L1/L2/L5 GPS/GLONASS)	0.19	0.42	3.80	149.61
Turret Camera Unit (TCU)	31.00	68.34	-0.50	-19.68
Interface Unit (IFU)	7.20	15.87	0.77	30.31
Hand Control Unit (HCU)	1.10	2.43	2.86	112.60

### NOTE

The masses shown in the table above are equipment masses without mounting provisions.

Doc. # 7.01.25-E Doc. # 11.01.05-E	Rev. 0      14-Feb-2025	Page 9-D56-13
---------------------------------------	-------------------------	------------------

**6.5.1 ADDITIONAL EQUIPMENT LIST**

Airplane Serial No.:		Registration:		Date:	
No.	Description	Part No.	Manufacturer	S/N	Installed
1	Cellular Broadband Blade Antenna	AV-265	RAMI	---	
2	Universal Hand Control Unit (UHCU)	AV-265	RAMI	---	
3	DC/DC Converter 120W	6430120-1	True Blue Power	D24-10344	
4	Blackmagic Video Assist 7" 12G HDR	12285801	Blackmagic Design	12659001	
5	Rugged Keyboard	IK-TR-911-RED-3 Y	iKey	522240004 71	
6	17,3" High Definition Rugged Display	VPT-17HD-MIL-P T	Viewpoint Systems	2599	
7	17,3" High Definition Rugged Display	VPT-17HD-MIL-P T	Viewpoint Systems	2600	
8	Telescope Camera Assy	APX60	CDA Systems	1422250-0 198	
9	Telescope	OP7812/2408	CDA Systems	---	
10	Gyro Unit	AD7814/2409	CDA Systems	---	
11	Mission Computer, Fanless	ABOX-5210G8-I9	Sintronics	SS241124 0026	

Airplane Serial No.:		Registration:		Date:	
No.	Description	Part No.	Manufacturer	S/N	Installed
12	Ethernet Switch	EDS-G4012-4GC -LV-T	Moxa	TBDGD10 30330	
13	LTE/5G Mobile Router	MAX-BR1-PRO-5 GN-T-PRM	Peplink	1932-A12B -2332	
14	Yellowbrik SDI Reclocking Distribution Amplifier	DVD 1417	LYNX Technik	338809	
15	GPS Antenna (L1/L2/L5 GPS/GLONASS)	MAT-743GPS121 6A-T1	Matterwaves	169521	
16	GPS Antenna (L1/L2/L5 GPS/GLONASS)	MAT-743GPS121 6A-T1	Matterwaves	---	
17	Turret Camera Unit (TCU)	TCU-400-163 A	Trakka System	201702163	
18	Interface Unit (IFU)	IFU-004-220 A	Trakka System	201702163	
19	Hand Control Unit (HCU)	HCU-003-202 A	Trakka System	201702163	

### NOTE

Changes in mass and balance caused by the installation of the CDA Andorra Configuration must be taken into consideration.

## **7. DESCRIPTION OF THE AIRPLANE AND ITS SYSTEMS**

### **7.1 INTRODUCTION**

The DA 62 can be equipped with optional mission equipment that allows the aircraft to be used for law enforcement, surveillance, border control and search & rescue. The equipment as part of this DEO consists of a SWE-400 camera system in the WX Multi-Purpose Nose. Further a Telescope is installed on the camera hatch with associated components for camera and telescope installed in the nose and rear baggage compartment.

### **7.10 ELECTRICAL SYSTEM**

#### **7.10.3 WARNING, CAUTION AND ADVISORY MESSAGES**

The mission equipment installed for this DEO are connected to the Mission Bus via the in the rear baggage compartment installed Power Panel.

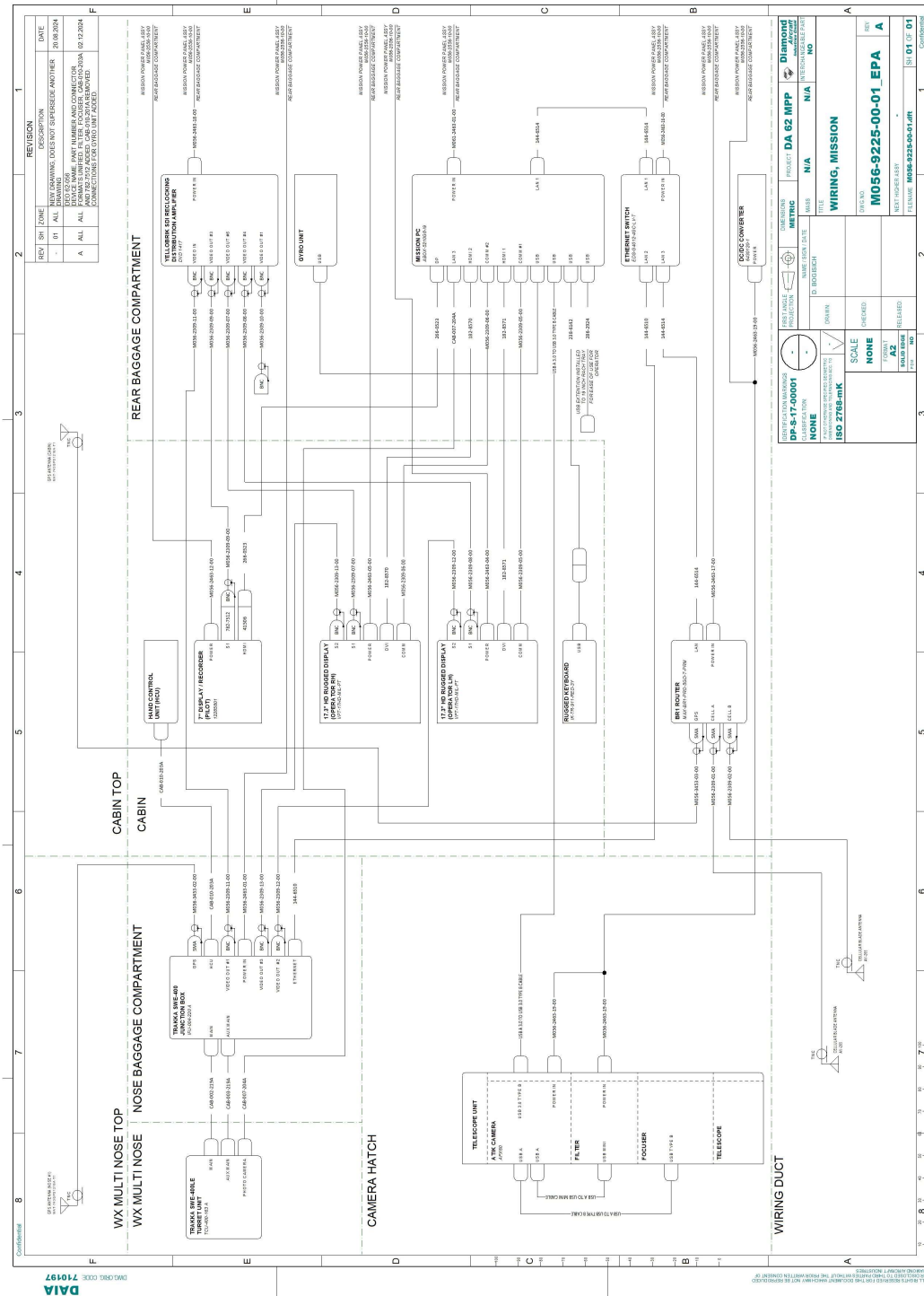
The following table shows the peak power consumption of the parts of the CDA Andorra Configuration at 28V DC. The maximum continuous power consumption is slightly lower. The table must be used in conjunction with the AMM of the DA 62 Doc. No. 7.02.25-DEO 62-056, Section 24-81.

<b>System</b>	<b>Power Consumption [A]</b>
Blackmagic Video Assist 7" 12G HDR	2.36A @ 14V
Rugged Keyboard	0.24A @ 5V
17,3" High Definition Rugged Display	2.35A @ 28V
17,3" High Definition Rugged Display	2.35A @ 28V
Telescope Camera Assy	5.0A @ 14V
Gyro Unit	2.0A @ 5V

Page 9-D56-16	14-Feb-2025 Rev. 0	Doc. # 7.01.25-E Doc. # 11.01.05-E
------------------	--------------------	---------------------------------------



System	Power Consumption [A]
Mission Computer, Fanless	7.0A @ 28V
Ethernet Switch	0.7A @ 28V
LTE/5G Mobile Router	0.68A @ 28V
Yellowbrik SDI Reclocking Distribution Amplifier	0.2A @ 14V
SWE-400 (TCU, IFU, HCU)	9.0A @ 28VDC
<b>Total</b>	<b>26.26A @ 28VDC</b>



## 8. AIRPLANE HANDLING, CARE AND MAINTENANCE

### NOTE

The CDA Andorra Configuration consists of a number of high precision parts.

The exposure of the equipped airplane to high humidity, high vibration/ shocks and high temperature variation should be avoided whenever possible.

### NOTE

For detailed information about the handling, care and maintenance of the CDA Andorra Configuration refer to the corresponding supplier manuals, latest revision.



Intentionally left blank.